

# CASTLE CHRONICLE

After a long, hot summer, Elephant and Castle is stepping into autumn, bringing renewed energy, colour, and community spirit. Rapid progress on site and our jam-packed programme of community engagement have added to the sense of excitement – read on to find out what this means for you!



From sun-soaked afternoons in Castle Square to music and laughter spilling through the streets, summer has been full of life. July's rain-defying Elefit event proved that nothing – not even the British weather – can dampen local enthusiasm. And now the celebrations continue as we come into autumn, with the Urban Elephant Festival returning this September to fill the area with creativity, performance, and local pride.

Alongside the festivities, there's plenty happening on site behind the hoardings. While the skyline now stands complete with all façades in place, inside the buildings a huge fit-out programme is in full swing. Hundreds of operatives are on site daily, installing kitchens, bathrooms, lighting, and final finishes – not just in the residential towers, but across the new public spaces that will soon welcome everyone. The transformation is gathering pace, bringing us ever closer to our exciting 2026 opening.

Inside this issue, you'll find all the information you need from the Inspiring Elephant programme's third funding round, the 2025 Careers Fair, and the launch of the renewed tube station, plus all the usual Kids' Corner fun with Ella and Chico's end-of-summer "spot the difference" challenge. From construction milestones to community moments, The Elephant has never been more vibrant, and we can't wait to share what's next as we move into autumn.

## FOR THE ELEPHANT AND CASTLE COMMUNITY

"Summer is always a highlight in Elephant and Castle, and this year has been no different. From the energy of Elefit to the impactful projects supported by the Inspiring Elephant fund, it's been fantastic to see our public spaces buzzing with activity and our community coming together.

We're now looking forward to Autumn and September's Urban Elephant Festival – a celebration of local culture, music and food that really captures the spirit of this neighbourhood. Events like these are at the heart of what we do: creating opportunities for people to connect, share experiences and enjoy everything the area has to offer.

Thank you to everyone who's joined us over the summer – and to those we are yet to see, we can't wait to welcome you during this year's Urban Elephant Festival and beyond."

**DIANA BARRANCO**  
PARTNERSHIPS DIRECTOR, GET LIVING





urbanelephant.co.uk  
@urbanelefest  
#urbanelefest

SCAN HERE FOR  
FULL TIMETABLE



URBAN  
ELEPHANT  
FESTIVAL

THE SUMMER EDITION | 20 SEPT 2025

FREE FESTIVAL CELEBRATING  
WORLD CULTURES  
THROUGH MUSIC + DANCE

STREET PITCHES  
WALWORTH SQUARE +  
SAYER STREET  
12-6PM

MAIN STAGE  
CASTLE SQUARE  
3-9PM

ELEPHANT + CASTLE | 12-9PM





# THE URBAN ELEPHANT FESTIVAL

An all-inclusive, community-bonding, family orientated festival. Combining the best in urban culture with art, music and dance.

Drawing inspiration from the local Latin, Afro-Caribbean and British heritage communities in Elephant and Castle, the festival aims to bond the old with the new, people and business, celebrating the spectrum of diversity and culture that exists within the area.

“I’m so excited that the Urban Elephant has become biannual with a Summer and Spring episode. In its 4th year, the Urban Elephant has established itself as the highlight of the festival season in the local area.

It is amazing that on two occasions we will be able to celebrate what has always made the area special. Celebrating diversity, creativity and amazing local business, this event spotlights why Elephant and Castle is so unique with a fun and free festival showcasing the area!”

**JOHN WHELAN**  
ARTISTIC DIRECTOR



## LINE UP

### 1. MAIN STAGE CASTLE SQUARE 3-9PM

3:02	Isa Aerobics	5:52	Kinashow
3:11	Talentos niños	6:29	Sonia'z fusion
3:27	Tinkus Puros	6:38	Yurupari Grupo Folklórico
3:33	Talentos Jovenes	6:48	Ilusión Flamenco
3:50	Bhavan Odissi	6:59	Bhavan Odissi
4:01	IRIE	7:07	Yurupari Grupo Folklórico
4:22	Expresion Inka	7:15	Sonia'z fusion
4:28	Yurupari Grupo Folklórico	7:26	Ilusión Flamenca
4:36	London School of Hula	7:38	London School of Hula
4:48	Expresion Inka	7:49	Sonia'z fusion
5:14	Yurupari Grupo Folklórico	8:01	Lokito Group
5:30	Offical Opening	9:00	End of Festival

### 2. STREET PITCH SAYER STREET 12-6PM

12:00	Carnival Jam	3:00	Bhangra Dance London
12:30	Kaago	3:30	Richard Filby
1:00	Jonathan Goh	4:00	Ilusión Flamenca
1:30	Abigail Collins	4:30	Tinkus Puros
2:00	Irie Dance Company	5:00	London School of Hula and Ori
2:30	Yurupari Grupo Folclórico	5:30	Expresión Inka

### 3. STREET PITCH WALWORTH TOWN HALL SQUARE 12-6PM

12:00	Abigail Collins	3:00	Expresión Inka
12:30	Bhangra Dance London	3:30	London School of Hula and Ori
1:00	Richard Filby	4:00	Kaagó
1:30	Yurupari Grupo Folclórico	4:30	Jonathan Goh
2:00	Tinkus Puros	5:00	Irie Dance Company
2:30	Carnival Jam	5:30	Ilusión Flamenca



# URBAN ELEPHANT FESTIVAL OFFERS & EVENTS

## FOOD & DRINK

### Original Caribbean Spice

10% discount on regular and large meals

### Nexgen Bar

£7 All Cocktails  
£5 House White, Red & Prosecco  
£5.50 Pints of Lager

### Arepa & Co

3 Tequeños for £5 or with a guarapita cocktail for £12

### Los Arrieros de Pito

£18 for pica pollo for 2

### La Bodeguita

20% off for first time buyers

### La Barra de Luisa

£2 off traditional colombian lunch - bandeja paisa

### Paladar

Exclusive pink elephant cocktail

### Kaietuer Kitchen

£10 plate: fried chicken, spinach rice and fried plantain

### Kachori

Happy hour 2-4pm - all cocktails and mocktails 2 for 1

### Heavenly Desserts

£5 off when you spend £25

### Beza Ethiopian Food

Unlimited sorrel ice tea when you buy a meal for two people

### Four Quarters Bar

2 free game tokens with selected drinks

### Jusu Brothers

Free ginger shot for first 20 customers

Free mini pain au chocolat or croissant with any coffee bought between 8-11am

### Pot & Rice

10% discount on regular and large meals

All day bubble tea happy hour

### Murger Han

Free tasting

### Cheeky Chicos

Happy hour - £8 drinks

6 bottles of Corona on ice for £20

### Hotel Elephant

50% off your first day pass using code URABNELE50

### Black Cowboy Coffee

20% off 2 bags or more

Buy one get one free on all bagels

### Badian Gelato & Chef Massimo Pizza

Free upgrade from piccolo cup to media

20% of all pizza slices

## FASHION & ACCESSORIES

### Maya Clothing

Spend £50 and get 10% off

### AR Accessories

20% off sunglasses and hats

### Medellin Moda

10% off all products

### Ana Castro

15% off jewellery

## HAIR & BEAUTY

### Forever Hairdresser

20% off haircuts

### Andrea's Hair Salon

20% off eyebrow waxing and threading

### Fer Estilos

20% of all treatments

## HOME & LIFESTYLE

### Magic Carpets

20% off any purchase during the festival

### Solo Craft Fair

Free second hand books (first come first served)

Blind date with a book 11am-5pm

### The Book Elephant

Free coffee when you spend £10

### Walworth Town Hall

Free tours from noon-3pm (book in advance via eventbrite)

## ELECTRONICS & TECH

### Laughland Communications

20% off power banks, Gorilla Glue and earpods

30% off fans

**DEALS  
ARE ONLY  
AVAILABLE  
ON 20 SEPT**

# INSPIRING ELEPHANT COMMUNITY FUND 2025!



The Elephant team is delighted to announce the successful applicants for the fourth round of the Inspiring Elephant Community Fund.

The annual £50,000 fund supports local groups and programmes delivering fantastic projects that have a positive impact on the community. Now in its fourth year, the fund has a focus on youth mobility, health and wellbeing and community cohesion.

Earlier this year, local organisations of all types were invited to apply for the fund, with a panel of local community leaders reviewing all applications. The panel was delighted by the strength of applications and we would like to thank all that applied.

**A huge congratulations to all of this year's recipients!**

**This year, 14 fantastic applicants have been awarded grants between £2,000 and £4,500.**

The full list of applicants is below:

### Southwark Playhouse

Southwark Playhouse Young Company  
**£3,000**

A leading London theatre offering young people opportunities to develop theatre skills, build confidence, and perform on stage.

### AA Educates CIC

Shaping Future Programme  
**£4,500**

A dynamic, youth-centred programme equipping young people aged 14-19 with the skills, confidence, and opportunities to thrive in education, employment, and beyond.

### Silverfit

Elephant & Castle Community  
**£4,000**

Inclusive yoga classes accessible to participants of all abilities.

### Org United Hearts CIC

The United Hearts Bloom Project  
**£3,000**

A series of self-care and emotional resilience workshops, particularly supporting women from underrepresented backgrounds.

### Latin Ageing UK

English for the Young at Heart 50+  
**£3,000**

Empowering individuals aged 50 and over to engage in vibrant social activities that enhance well-being.

### Friends of Crampton

After Hours School Clubs Expansion  
**£3,000**

Supporting the further expansion of after-hours school clubs for all students at Crampton Primary School.

### Superarts Academy of Performing Arts

RENEWAL Qigong & Expressive Writing Courses  
**£4,000**

Well-being focused writing courses aimed at reducing stress and anxiety among residents.

### Mental Fight Club

Create, Relate and Integrate at The Dragon Café  
**£4,000**

Creative and social sessions providing a supportive space for people experiencing mental ill-health, fostering connection and well-being through varied activities

### Active Communities Network

Inspire Youth Club - Good Food Fridays  
**£4,500**

Providing local youth with a safe, welcoming space to learn cooking, nutrition, and teamwork skills on Friday evenings.

### Hotel Elephant St Johns School Ltd

Sustainable Textiles Saturday Club  
**£4,000**

A new club which gives young people hands-on experience in sustainable fashion and design.

### Communities 1st

Dance Classes for Older Adults  
**£2,000**

Weekly dance sessions encouraging older adults to stay active, healthy, and socially connected.

### People's Company

Elephant Community Fusion  
**£3,500**

A local theatre tour that celebrates the diverse neighbourhood of Elephant and gives local people a platform to perform and connect.

### Art in the Park

Elephant Art Club  
**£3,500**

A community arts organisation delivering inclusive visual arts and heritage projects, primarily from its studios in Southwark.

### Draper Together CIO

Draper Kids Club  
**£4,000**

A vibrant charity dedicated to fostering unity and empowerment within the Elephant and Castle community in London SE1.



# UNDERGROUND STATION UPGRADE



A brighter, better-connected  
Elephant & Castle is on the way!

Big changes will be coming to Elephant & Castle Tube Station, and they're set to make a huge difference for everyone who lives, works, studies, or visits here.

The new entrance, right in the heart of The Elephant, will make getting around easier than ever before. For the first time, you'll be able to walk straight in from street level and hop down to the platforms using an escalator rather than waiting for a lift. You'll also be able to reach the Northern line platforms without encountering a single stair. This step-free access will mean the station works for everyone – parents with prams, people with luggage, wheelchair users, and anyone who just appreciates a smoother journey.

It's not just about convenience, it's about capacity. The station upgrade will boost space by over 30%. By supporting the delivery of the thousands of new jobs and homes being provided by The Elephant and other developments, the



**SCAN TO  
LEARN  
MORE**

improvements will help unlock huge potential for local people and businesses.

In the future, the new entrance will also connect with the proposed Bakerloo line extension, meaning passengers will be able to access both lines from one ticket hall.

While the main tunnel construction won't kick off until 2026, TfL - with their contractor Dragados - are already getting ready for the tunnelling works, which is the first step in enabling this smoother journey on the Northern Line. This does mean some short-term changes will take place: a welfare facility will be installed to service the site, trial holes will be dug outside the station, and in October, the cycle path around the peninsula will temporarily close for sewer connection works. Some pedestrian diversions will also be in place for lifting operations - all clearly signposted, with disruption kept to a minimum.

Anyone impacted will receive further communication, and you can look out for monthly updates in The Elephant monthly newsletter.



# A MILESTONE UNDERGROUND: ELEPHANT & CASTLE CELEBRATES RENEWED STATION CEREMONY



On Monday 16 June, deep beneath the streets of London, a significant moment in the transformation of Elephant & Castle Tube Station was marked with a memorable Renewed Station Ceremony.

Hosted at the heart of the construction site, the ceremony celebrated the completion of the new integrated ticket hall (ITH) structure, a major milestone in the ambitious upgrade of one of South London's busiest transport hubs. Attendees were invited underground for an exclusive first look at the progress, descending into the future of Elephant & Castle's transport infrastructure.

The event was officially opened by Howard Dawber, Deputy Mayor for Business & Growth, who acknowledged the efforts of everyone involved in the project, from engineers and architects to local community partners. He highlighted the importance of the station's redevelopment in improving accessibility, easing congestion, and supporting the wider regeneration of the Elephant & Castle area.

Guests were treated to the unveiling of a striking Bakerloo Line-inspired mural, created in collaboration with students from the London College of Communication (LCC). The mural reflects the rich history and exciting future of the station, and stands as a symbol of the strong connection between the local community, education institutions, and public infrastructure. As such, the Renewed Station Ceremony not only marked a physical transformation beneath the city but also underscored the spirit of collaboration, innovation, and progress driving the project forward.



# A MIDSUMMER NIGHT'S DREAM

Southwark Playhouse presents A Midsummer Night's Dream

This September, acclaimed director Toby Hulse reimagines Shakespeare's most joyful comedy in a production that's funny, fast-paced, and welcoming to everyone — whether you're discovering the Bard for the first time or know the play by heart. Expect a show that is clear, laugh-out-loud funny, and full of magic.

Making theatre accessible has been at the heart of Southwark Playhouse for over 30 years. Alongside evening performances, nine special school matinees will give nearly 2,000 local pupils the chance to experience Shakespeare live — completely free of charge.

**Venue: Southwark Playhouse Borough**  
**Tickets: from £10 | Family Tickets Available**  
**Date: 5 - 27 September**

Book now | Box Office: 020 7407 0234 | [boxoffice@southwarkplayhouse.co.uk](mailto:boxoffice@southwarkplayhouse.co.uk)

# THE MARKET AT THE ELEPHANT

We are excited to let you know that, following a short summer break, Elephant Park Market will be restarting every Saturday and Sunday from 13 September, now just a few moments from Elephant Park in Castle Square. The new location offers more space and improved access but the same great mix of independent food, drink and retail stalls you love. To celebrate this new chapter, the market is also being renamed The Elephant Market to reflect its new home in the heart of the neighbourhood.



# 2025 CAREERS FAIR

## Elephant & Castle Careers Fair opens doors for over 400 local students and jobseekers

The Elephant and Castle Careers Fair returned to Southwark College on 25 June for its third year – and it was bigger, busier, and more inspiring than ever. Over 400 local students and jobseekers came through the doors to explore new career paths, apprenticeships, and training opportunities across Southwark and London.

For the first time, jobseekers were referred by the Department for Work and Pensions, helping the fair reach those who could benefit most. More than 30 employers and training providers took part, from engineering and construction to health, education and public services. Exhibitors included the NHS, Multiplex, the Metropolitan Police, London South Bank University, the London Fire Brigade, Beko, and The Army.

Attendees didn't just meet employers – they got stuck into hands-on workshops like a tower-building engineering challenge, and joined two lively panel sessions packed with career tips, confidence-building advice, and inspiring stories.

Special guests including Mayor of Southwark Cllr Sunny Lambe, Cllr John Batteson, Cllr Naima Ali and Cllr Martin Seaton joined the day, sharing their own career journeys and encouragement with attendees.

The Careers Fair is one of the many ways The Elephant team is backing the community and local economy – alongside the Community Hub, Inspiring Elephant Fund and a year-round programme of events designed to spark ambition, open doors and create opportunities for all.





KIDS' CORNER

Ella and Chico are off to the beach! Can you help them spot all 12 sneaky differences hiding in the sun, sea, and ice cream fun?



- Answers
1. Shark fin reversed

2. Umbrella detail

3. Missing seagull

4. Sandcastle flag

5. Icecream flake

6. Pink tongue

7. Cloud over sun

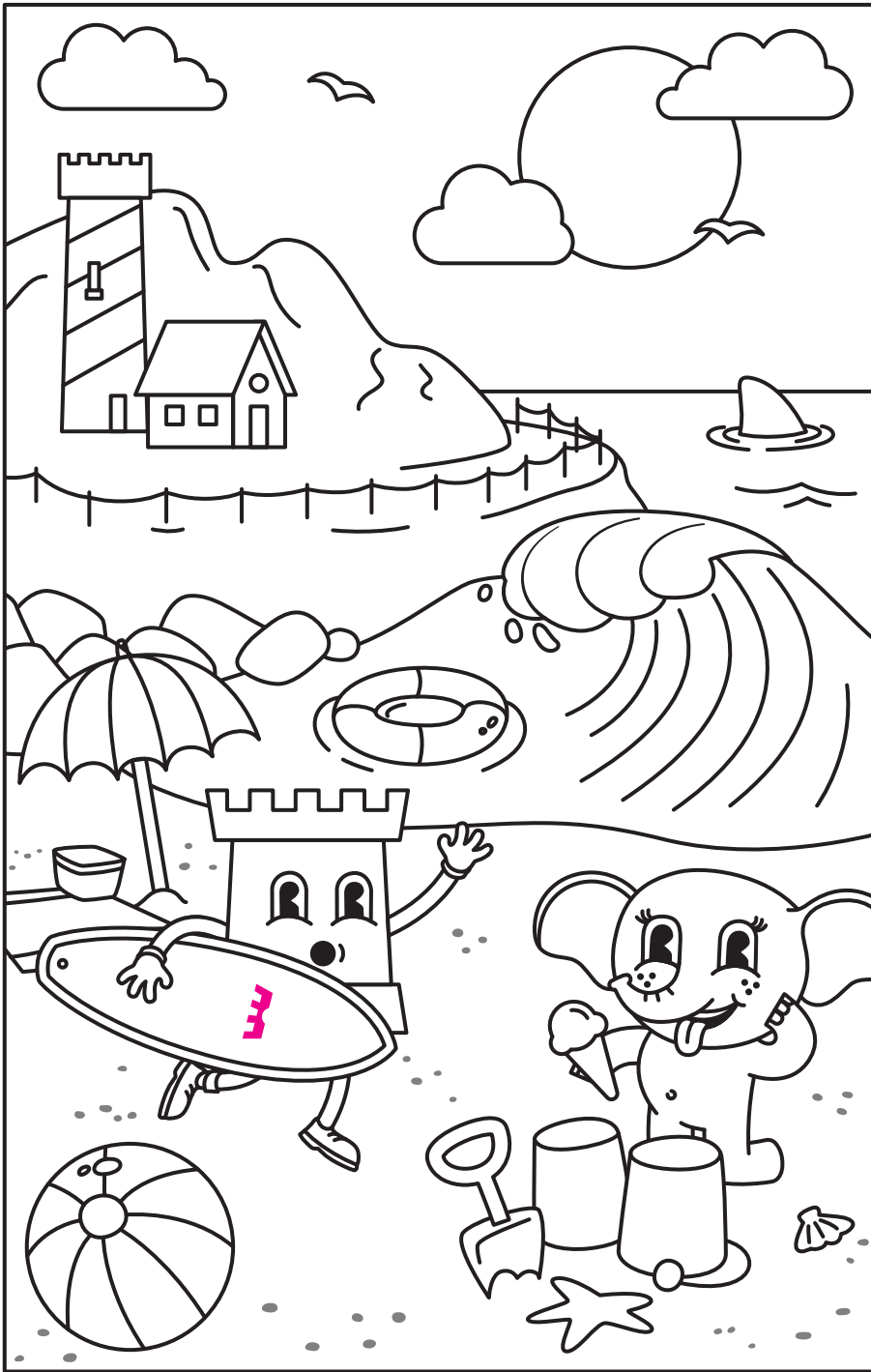
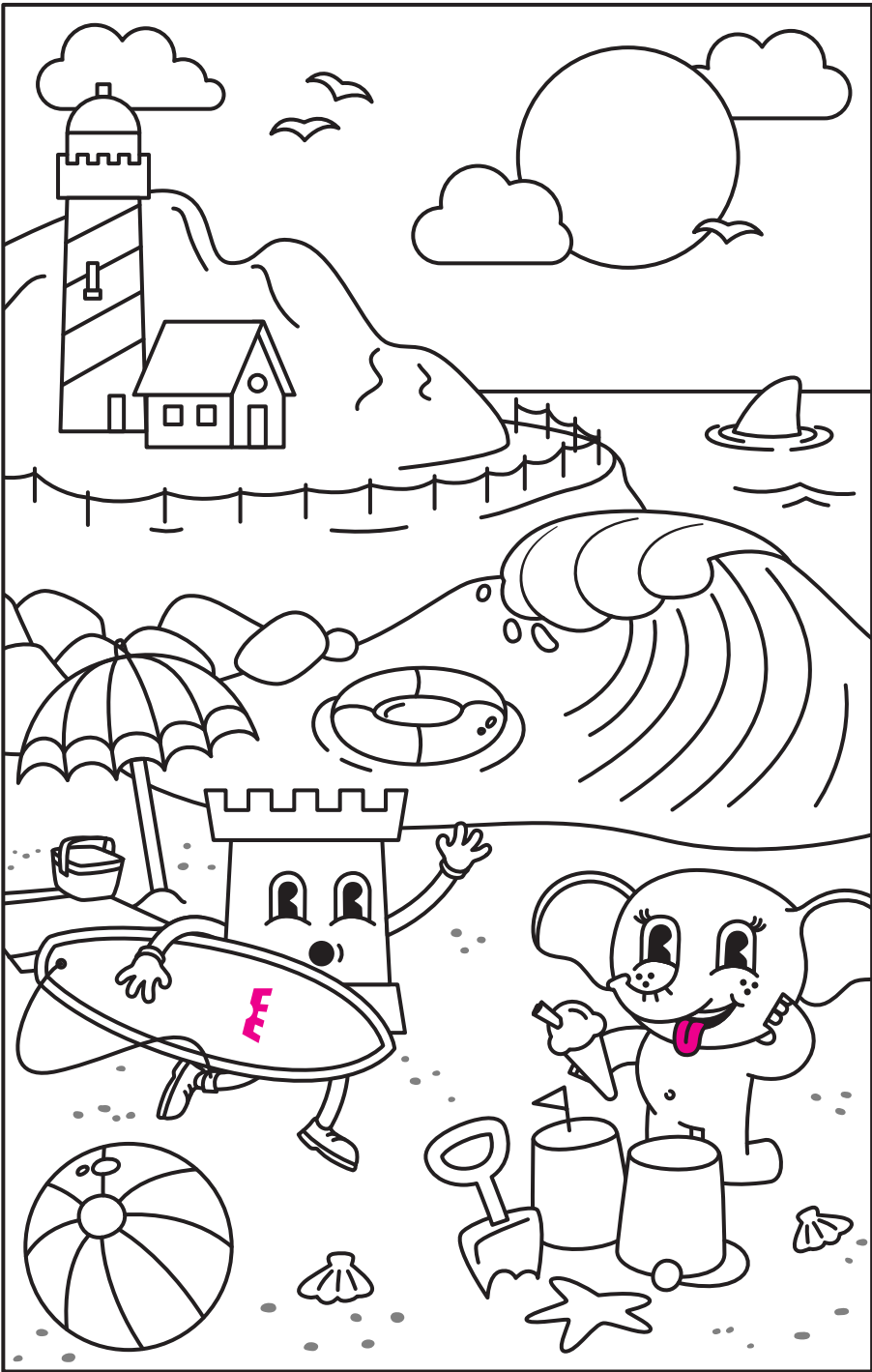
8. Surfboard logo

9. Surfboard leash

10. Basket handle

11. Top of lighthouse

12. Missing shell



HAVE YOUR SAY

Get in touch by emailing:  
[info@elephantandcastletowncentre.co.uk](mailto:info@elephantandcastletowncentre.co.uk)  
and let us know what you think.

Do you enjoy the Castle Chronicle?  
What have you liked reading?  
What would you like to hear more about?

Do you have any suggestions for content in a future edition?  
Do you know any local heroes or great businesses you think we should showcase?

CONTACT US

For more information about what is happening on site, the future town centre and the latest news please visit:  
[elephantandcastletowncentre.co.uk](http://elephantandcastletowncentre.co.uk)

Here you can also sign up to our monthly community update newsletter.

For any questions regarding the Elephant and Castle Town Centre please email the team on:

[info@elephantandcastletowncentre.co.uk](mailto:info@elephantandcastletowncentre.co.uk)

PLEASE RECYCLE ME