

# CASTLE CHRONICLE

Welcome to the Easter Edition of Castle Chronicle, for the Elephant and Castle community

## WELCOME TO THE EASTER 2025 EDITION OF THE CASTLE CHRONICLE!

There’s excitement in the air across Elephant and Castle as Spring returns to breathe new life across the town! There’s also more inside on our annual Easter celebration event in Castle Square, alongside loads of information on our range of community initiatives, construction progress and more!

2024 was a landmark year for The Elephant project, and 2025 promises to be even more transformational. Now that all buildings have reached their highest points, interior work is accelerating at full throttle. Construction activity has surged to unprecedented levels with more operatives on site than ever before, working to complete fit-out works, installations, and a range of system integrations.

The development is gearing up for its grand 2026 debut, poised to deliver a dynamic mix of retail, dining, leisure, and housing - all cementing Elephant and Castle’s future as a thriving urban

hub. We can’t wait to bring more news soon about what you can expect to see once The Elephant is completed.

We’re also doing more work with the local community than ever before. Inside you’ll find all the details about our Easter Eggstravaganza taking place on April 18th in Castle Square, as well as a range of events delivered by the Elephant and Castle Community Hub and our partners. For the first time, you can also find an exclusive link inside to sign up for the Elephant and Castle Careers Fair 2025, so you won’t want to miss out!



DIANA BARRANCO

ELEPHANT AND CASTLE  
TOWN CENTRE  
COMMUNITY DIRECTOR



“Spring isn’t just a season - it’s a burst of colour and energy for Elephant and Castle! Our team is seizing the longer days to roll out an incredible roster of events. Flip through this edition to explore what’s in store at Castle Square, including our brand-new Easter Eggstravaganza on April 18th, complemented by exclusive deals from neighbourhood businesses.

“This year is pivotal: while we host unforgettable gatherings, The Elephant’s transformation is hitting its stride. With construction crews racing toward the finish line, we can’t wait to share this next chapter with you. Come and be part of the momentum!”





# INTRODUCING THE TRUNK

We're excited to announce that The Castle Chronicle will be rebranding as The Trunk this June!

From this summer, The Trunk will be your ultimate guide to all things Elephant and Castle - available online and in the heart of the town centre.

Stay up to date on community events, hear from local residents, and get the latest on retailers and lettings.

More updates to come, so keep an eye out!



## CASTLE SQUARE'S EASTER EGGSTRAVAGANZA



**This Easter, Castle Square will host a Community Easter Eggstravaganza!**

Come along on Friday 18th April from 11am to 5pm to celebrate the spring season in a day of fun activities and community spirit.

Free activities on offer will include exciting stories told by the Easter Wizard, face painting for all ages, and a 'Magic of Spring' show from local dance

school Talentos. Dancers from Upside Down Dance – a dynamic dance collective – will be performing to Afro-Dance and House throughout the day.

Families can also play exciting games, win prizes from Castle Square traders and have a go at the free dance workshops on offer.

The Easter Event is open to all and a brilliant opportunity to celebrate the season among the local community. With something for everyone, the Easter Eggstravaganza is a fun and free day and we can't wait to see you there!

**Date:** Friday 18th April  
**Time:** 11am – 5pm  
**Place:** Castle Square,  
40 Elephant  
Road, London,  
SE17 1EU

# BUSINESSFORBAKERLOO



Businesses of all shapes and sizes along the Old Kent Road, across The Elephant and beyond will benefit from a full Bakerloo Line Upgrade and Extension (BLUE).

An upgraded line, with new trains and signalling, fully extended to Lewisham and Hayes will incentivise more people to come to The Elephant and explore new cultural and commercial opportunities as well as allowing our residents to more easily explore southeast London.

With public opinion around the BLUE gaining momentum, government support is the only thing slowing this down. BusinessForBakerloo is the business voice calling for the Government to commit to the BLUE in full. The campaign is made up of businesses by one primary aim: to turn the Bakerloo into a world-class transport link.

BusinessForBakerloo welcomes support from all sectors of the business community regardless of size or scope. If you're a business owner, you can support the campaign and push for a BLUE that supports London's thriving business community.

You can sign up by visiting their [website here](#).

## SOUTHWARK REVIVES HISTORIC FOUNTAIN

A historic Victorian drinking fountain in Christ Church Garden, near Blackfriars Bridge, has been fully restored and reopened thanks to the Heritage of London Trust (HOLT), in partnership with Southwark Council and Delancey.

Originally built in 1900, the fountain survived the Blitz but needed repairs. The restoration included new foundations, a hand-carved stone basin, and new taps, ensuring it once again provides free fresh drinking water.

As part of HOLT's Proud Places programme, 130 young people joined workshops in conservation and stonemasonry, bringing history to life.





# VOICES OF ELEPHANT

LEE WOYUNG

The Voices of Elephant and Castle project is a series of impactful conversations with important local stakeholders. This time we interview Lee WooYung, founder of exciting new Korean restaurant CheeMC.



## Tell us about yourself, and how you came to set CheeMC up in Elephant and Castle.

Setting up Cheemc in the area has been a great experience. We actually started trading on Walworth Road in 2014, and were lucky enough to move back to the area with our new unit by Castle Square a decade later. We saw the opportunity of the location next to Castle Square, and have been pleased that ever since we opened the restaurant has been constantly packed!

It's also been a great opportunity to expand our menu, and introduce a number of western-inspired additions to our Asian-focussed menu. This has been a very rewarding challenge, and we can't wait to see what the community thinks.

## What are some of your favourite menu items?

Fried chicken and beer is a big part of Korean culture, just like fish and chips in the UK. Can you believe that there are more fried chicken shops in Korea than there are branches of McDonald's in the entire world? We think of it as soul food.

We've got ten different flavours of fried chicken on our new menu – four more than we had in Walworth Road. Every flavour is brilliant, so I can't choose between them!

## What are some of the challenges and opportunities you've faced?

Luckily getting up and running in Castle Square only took four months, a lot longer than the year it took to get our Soho location ready!

In terms of the opportunities, the area is so well-developed and there is obviously a huge number of customers right on our doorstep. We feel that we are now very well located in terms of footfall, and believe this will be a big boost for business. Alongside this, there is a lot of work being done currently on the culture and brand of the area.

## How do you see things developing in the future?

We're planning to open a third branch this year, which is extremely exciting, and maybe by the end of the year we can even add a fourth!

At our Elephant and Castle location, we are developing a series of offers for local residents and people working locally, so watch this space!

Website: [www.cheemcuk.com](http://www.cheemcuk.com)

Instagram: [@cheemc\\_elephantandcastle](https://www.instagram.com/cheemc_elephantandcastle)

The Voices of Elephant and Castle project is a series of honest conversations with impactful local stakeholders about their experiences of the area.

**ripe learning**  
PEOPLE • SKILLS • POSSIBILITIES

## FREE COURSES

Unlock your potential with English, Maths and Digital Skills courses, designed to help you gain valuable skills and qualifications for your future!

**ESOL**  
English for Speakers of Other Languages

**DIGITAL SKILLS**

**FUNCTIONAL SKILLS ENGLISH**

**FUNCTIONAL SKILLS MATHS**

**OTHER EDUCATIONAL PATHWAYS**  
Receive guidance to register for other educational courses you might be interested in joining

**SCAN ME!**

**REGISTER NOW** ☎ 07762 913366 ✉ [joinus@ripelearning.com](mailto:joinus@ripelearning.com)

**SOUTHWARK PLAYHOUSE**

20 MARCH - 19 APRIL  
**WILKO**  
Borough

4 APRIL - 17 MAY  
**MIDNIGHT COWBOY**  
Elephant

30 APRIL - 17 MAY  
**COCKFOSTERS**  
Borough

23 MAY - 28 JUNE  
**THE FROGS**  
Borough

SOUTHWARKPLAYHOUSE.CO.UK  
020 7407 0234

**SPARE STREET WORKS**

Flexible Affordable Desk and Office Space. In Central Elephant & Castle.

Your Local Coworking Space!

**Use code: CASTLE50 for 50% off your first day pass!**

**Book Today:**

# ELEPHANT & CASTLE CAREERS FAIR 2025!



Get ready, the Elephant & Castle Careers Fair is back for 2025, and it's bigger and better than ever!

In partnership with Southwark Council, this event builds on the success of last year and is your chance to connect with a wide range of employers, discover exciting career paths, and explore opportunities that could shape your future.

Whether you are looking for your first job, career inspiration, considering an apprenticeship, or simply looking to expand your professional network, the Elephant & Castle Careers Fair is the perfect place to start.

Mark your calendars and get ready to take the next step toward your dream career. We can't wait to see you there!

**Date:** Wednesday, 25th June

**Time:** 11am – 4pm

**Place:** Southwark College

THE ELEPHANT AND CASTLE COMMUNITY HUB AND KALEIDOSCOPE BRING YOU THE ELEPHANT AND CASTLE

## DIVERSITY TOUR

This tour brings to life the history of Prince Monolulu and local diverse stories.

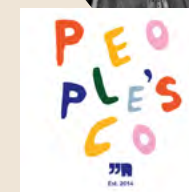
**DATE:** SAT 5TH APRIL  
**TIMES:** 13:00 - 15:00  
**DURATION:** 1.5 HOURS

**REGISTER FOR FREE HERE**

Tickets go live on 12th March  
Tour starts at Castle Square, 40 Elephant Road, SE17 1EU.

**KALEIDOSCOPE**  
**ELEPHANT AND CASTLE COMMUNITY & ENGAGEMENT HUB**

@elephantandcastlecommunityhub  
[www.communityhubse1.co.uk](http://www.communityhubse1.co.uk)



## LOOKING FOR A JOB?

### CAREERS FAIR 2025

The team behind The Elephant, in partnership with Southwark College, is delighted to announce the return of the 2025 Careers Fair.

Building on the success of last year's event, it will be a fantastic opportunity for young people in Southwark to explore opportunities with employers and education providers from a variety of sectors.

**DATE:** Wednesday 25th June

**TIME:** 11am – 4pm

**VENUE:** Southwark College  
25 The Cut,  
London SE1 8LF

**SCAN HERE TO SIGN UP**



**SOUTHWARK COLLEGE**

**THE ELEPHANT**

**getliving**



# WALWORTH TOWN HALL REOPENS

After years of restoration, Walworth Town Hall has been transformed into a dynamic space for businesses and the community. Led by General Projects and Southwark Council, the project brings new life to the 1894 landmark, which had been placed on Historic England's "Heritage at Risk" list following a 2013 fire.

Now spanning 50,000 square feet, including the former Newington Library and Cuming Museum, the redeveloped site offers flexible offices, coworking spaces, a community centre, café, and restaurant. A new entrance onto Walworth Square enhances accessibility and connects it to the wider regeneration of Elephant and Castle.

Blending history with modern purpose, the town hall is once again a key part of the neighbourhood.

Visit our website: [Walworth Town Hall Community Space](#)



## Southwark Playhouse launches the FORGE Festival

Taking place over the course of one week, in 'The Little' auditorium at Southwark Playhouse Borough, the festival comprises four dynamic, innovative, electric world premieres of work in development created by some of Britain's most exciting young theatre companies. The festival performances are the culmination of a year's residency at Southwark Playhouse as part of the FORGE artist development scheme.

Date: 13 - 17 May 2025  
Place: Southwark Playhouse

## EASTER CAMPS

AT THE ELEPHANT AND CASTLE COMMUNITY HUB

**PERCUSSION SESSIONS**  
Delivered by Kaago

8th April	10:00AM – 11:30AM
14th April	1:30PM – 3:00PM
16th April	10:00AM – 11:30AM

**FITNESS SESSIONS**  
Delivered by Wellbeing Excellence

9th April	10:00AM – 11:30AM
15th April	10:00AM – 11:30AM
	1:00PM – 2:30PM

**VENUE:**  
Upper Floor, Unit 21, Castle Square  
40 Elephant Rd, SE17 1EU

**BOOK NOW:**  
[whelanjohnwalworth@gmail.com](mailto:whelanjohnwalworth@gmail.com)  
15 places available

**FREE!**

**ELEPHANT AND CASTLE COMMUNITY & ENGAGEMENT HUB**

**KALEIDOSCOPE**

[www.communityhubse1.co.uk](http://www.communityhubse1.co.uk)

[@elephantandcastlecommunityhub](#)  
[@whatsontheelephant](#)

Little LOUIE

# FLUNKY

April 17<sup>TH</sup>

SCAN ME

@PINKODACollective  
7PM DOORS OPEN  
7:10 SHOW  
SET 160

hotpod Elephant and Castle

## Get that free yoga feeling.

Join us for a free\* launch class in April.

\*£5 deposit to hold your place, refunded after class.

@hotpod\_elephantandcastle  
Hewson Way, Elephant Park

Little LOUIE

## Pool The Magic Drag-Hun & present

### Easter Egg-stravaganza Drag Show!

FRIDAY 18TH APRIL  
7:30-9:30PM  
Little Louie  
14 Ash Ave, London SE17 1GQ  
<https://littloulouie.london/>

## RENEWAL

remember  
reconnect  
reclaim YOU

By observing your body through the movement practise, writing prompts will be offered to ground and deepen your experience, inviting you to remember, reconnect and reclaim 'YOU'.

NEW COURSES IN 2025  
FRIDAYS  
9.30am-11.00am  
COURSE ONE - 5 WEEKS  
FEB & MAR  
COURSE TWO -  
MAY, JUNE & JULY

Practices will include:  
Standing Meditation (Zhan Zhuang)  
Eight Pieces of Brocade (Ba Duan Jin) &  
Cloud Hands (Yun Shou)

For further information  
FACILITATOR:  
SUSAN HAYES  
m: 07721 927714  
e: [susan@artsacademyofsuperarts.co.uk](mailto:susan@artsacademyofsuperarts.co.uk)

LIMITED SPACES  
BOOK YOUR PLACE NOW!  
FEES ON APPLICATION

VENUE: CROSSWAYS  
18 HAMPTON STREET, SE1 6SN

# COMMUNITY EASTER EGGSTRAVAGANZA

Join us on Friday 18th April from 11am – 5pm at Castle Square

Castle Square, 40 Elephant Rd, London, SE17 1EU

Perfect for the whole family, come and enjoy free activities including face painting, storytelling by the great Easter Wizard, dance performance and workshops, with prizes to claim from Castle Square traders.

**CASTLE SQUARE**

[@castlesquarelondon](#)  
Castle Square London

## BREAKING THE SILENCE

IWM's Exhibition on Sexual Violence in Conflict

Imperial War Museums (IWM) presents Unsilenced: Sexual Violence in Conflict, the UK's first major exhibition on this harrowing topic. Running from 23 May to 2 November 2025 with free admission, it explores sexual violence as a weapon of war from the First World War to today.

Featuring 162 objects, testimonies, and expert insights, Unsilenced examines state-sanctioned abuse, wartime atrocities, and the fight for justice. It also highlights key NGOs supporting survivors, including Women for Women International and Free Yezidi Foundation.

# IWM

WAR MUSEUMS



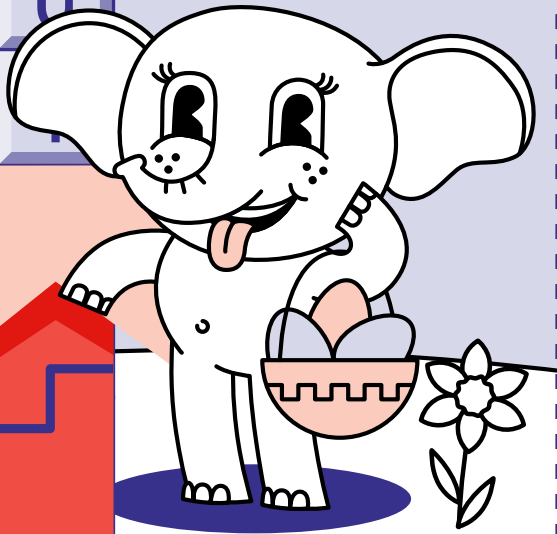
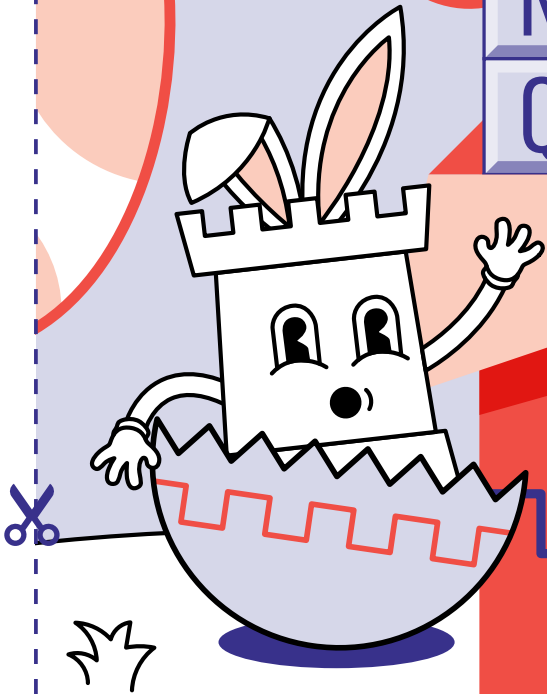
KIDS' CORNER

Can you help Ella and Chico solve the word search?

B	U	N	N	Y	C	H	I	C	K
K	N	S	S	B	A	D	O	L	P
S	P	R	I	N	G	A	H	W	K
N	P	J	A	U	G	B	U	O	K
J	N	M	M	Y	U	A	B	S	P
E	A	S	T	E	R	S	O	H	G
N	L	H	U	N	T	K	N	C	M
Q	J	E	G	G	S	E	N	S	G
T	L	T	W	T	E	Z			
	J	X	K	T	U				

ANSWERS

E	U	T	K	X	J	J	Y	R	
Y	Z	E	T	W	T	L	T	J	
G	N	E	S	E	G	G	E	O	
M	C	N	G	M	N	T	H	N	
G	H	O	S	R	E	A	S	E	
P	J	A	U	M	Y	M	M	J	
K	N	P	J	A	U	G	B	U	
K	S	P	R	I	N	G	A	H	
L	P	S	S	B	A	D	O	L	
K	B	U	N	N	Y	C	H	I	



HAVE YOUR SAY

Get in touch by emailing:  
[info@elephantandcastletowncentre.co.uk](mailto:info@elephantandcastletowncentre.co.uk)  
and let us know what you think.

Do you enjoy the Castle Chronicle?  
What have you liked reading?  
What would you like to hear more about?

Do you have any suggestions for content in a future edition?  
Do you know any local heroes or great businesses you think we should showcase?

CONTACT US

For more information about what is happening on site, the future town centre and the latest news please visit:  
[elephantandcastletowncentre.co.uk](http://elephantandcastletowncentre.co.uk)

Here you can also sign up to our monthly community update newsletter.  
For any questions regarding the Elephant and Castle Town Centre please email the team on:  
[info@elephantandcastletowncentre.co.uk](mailto:info@elephantandcastletowncentre.co.uk)



ELEPHANT + CASTLE  
TOWN CENTRE