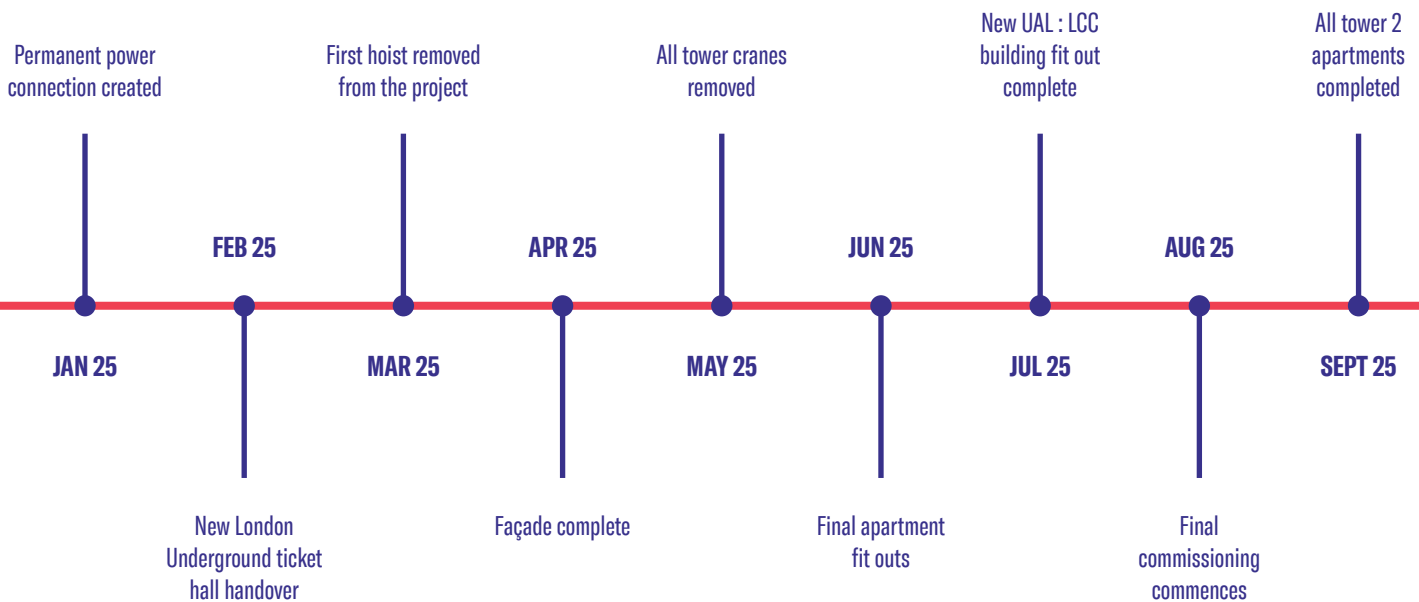


# COMMUNITY UPDATE

## SITE ACTIVITY UPDATE

From the outside it may seem like less is happening on-site now that buildings have reached their highest point and façade installation is complete, however there are actually more operatives on-site than ever, busily working away internally. This edition also brings further details of a number of exciting new community events.

## CONSTRUCTION UPDATE



### KEEPING YOU INFORMED

The development team, including contractor Multiplex, will continue to hold online Neighbourhood Information Forums. During these forums, we will provide you with an update on the project and inform you of all planned works for the upcoming couple of months.

**THE NEXT VIRTUAL NEIGHBOURHOOD INFORMATION FORUM IS SCHEDULED FOR TUESDAY 1ST APRIL AT 18:30.**

To register your interest, please email [info@elephantandcastletowncentre.co.uk](mailto:info@elephantandcastletowncentre.co.uk) and a meeting link will be sent in advance.

### MULTIPLEX CONTACTS AT ELEPHANT AND CASTLE:

**AMY DAWSON**  
Social Value and Community Lead  
M: 07715 629701 (Mon-Fri)

**PROJECT SUPPORT CONTACT DETAILS**  
M: 07494 592024 (24/7, out of hours)  
E: [ECTC@multiplex.global](mailto:ECTC@multiplex.global)

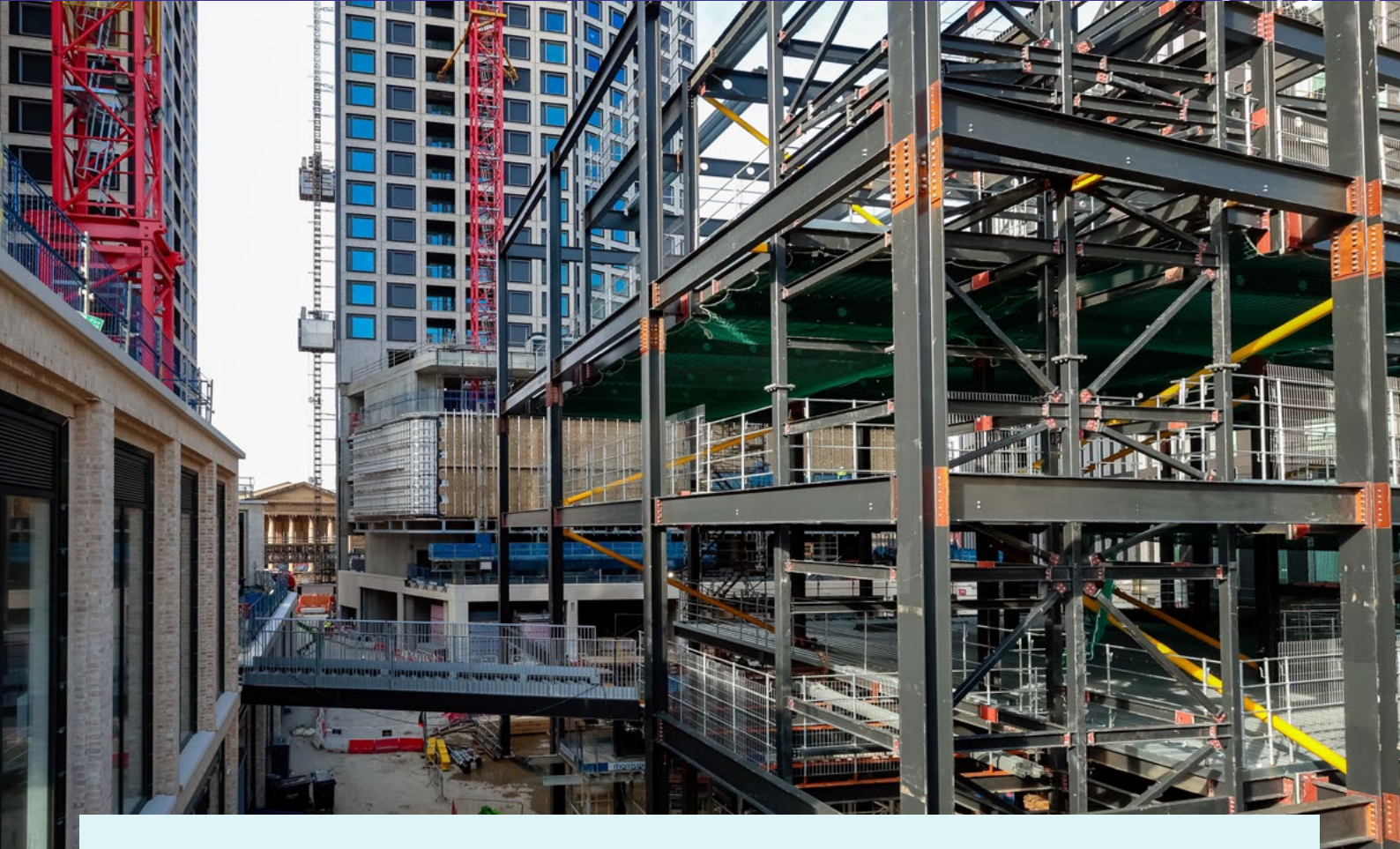
**WEBSITE:**  
[www.elephantandcastletowncentre.co.uk](http://www.elephantandcastletowncentre.co.uk)

**STANDARD WORKING HOURS:**  
Monday—Friday 08:00 to 18:00  
Saturday 08:00 to 13:00

**AGREED ADDITIONAL WORKING HOURS:**  
Monday—Friday 18:00 to 20:00



# CONSTRUCTION UPDATE



The steel frame for the structure housing some of the retail, leisure and workspace is now complete, paving the way for floor slab installation to commence.

- The E1 (12 storey new London College of Communication building) façade installation is now complete and internal fitout works are ramping up, with work on all levels due to commence by the end of March. Finishing works on the roof of the building are now at 90% completion.
- The tower 1 (34 storey residential tower) façade installation is now complete, along with the installation of bathroom pods. Fit out 'white box', the term used for completion of the walls, floor and ceilings and utilities is now completed to level 17, with flooring complete to level 15 and kitchens installed to level 13. Roof works are also ongoing, encompassing planter boxes, louvres and waterproofing.
- On tower 2 (20 storey residential tower) and tower 3 (22 storey residential tower), façade panel installation has also now completed. Fit out 'white box' has now been achieved up to level 15 on each tower, with flooring, kitchens and joinery works underway up to level 10. The roof crown steel is complete and final finishing works on the roof are in progress.
- The retail, leisure and workspaces are starting to take shape, with façade in these areas being progressively installed. The area is now watertight, and the bathrooms for the workspaces are currently under construction. All the heating and ventilation units, as well as the fan systems, have been moved to the correct floors and are being installed progressively across levels 2-4. The steel frame for part of the structure is now complete, with concrete floor slab installation to begin imminently.
- There are currently three vehicle entry/exit gates and two external pit lanes in use across the project, managed by teams of dedicated trained traffic marshals through Multiplex's supply chain partner, Clipfline. We have recently moved the location of the site office and welfare accommodation to Walworth Road, with the previous site cabins near the Northern Line entrance now removed from site.
- At present, approximately 1200 people are coming to work on the project every day, comprising operatives (approx. 1000) to management staff (approx. 200).

# COMMUNITY UPDATE

## SOCIAL VALUE UPDATE

On Thursday 13th February, members of the Multiplex team, in partnership with Southwark Works, participated in an Apprenticeship Fair at Southwark Skills Centre as part of National Apprenticeship Week. The event saw the team discuss the opportunities on the project, promote the launch of Multiplex's new Apprenticeship Programme, and provide advice to candidates seeking employment. A local Southwark resident has also joined the team, starting work on 20th February in Multiplex's Project Office.

The Multiplex team also hosted a project visit from a group of young people from Inspire Walworth. The group attended the site on 20th February and met with Multiplex's graduates to hear about their work on the Elephant and Castle project.

Multiplex continues to work with LCC to support a filming project for a select group of students. The project consists of scheduled filming visits with the tutor and some students, along with interviews from the wider project team, and will run until June.



## CAREERS FAIR 2025

As announced earlier this year, the Elephant & Castle Careers Fair is back for 2025!

The Fair, hosted with Southwark Council, will be a brilliant opportunity for young people from across Southwark to meet with a variety of employers to learn about diverse career opportunities.

The 2025 Careers Fair will take place on **Wednesday 25th June at Southwark College**. We can't wait to see you there!

## ENVIRONMENTAL SUSTAINABILITY UPDATE

### RESPONSIBLE SOURCING OF MATERIALS

With construction fit-out progressing, new material types are being installed. This includes drylining, fixtures and fittings, kitchen installations and flooring. The project team has worked closely with the supply chain to ensure 100% of key materials remain responsibly sourced to accepted certifications, ensuring sustainability in manufacturing.

## CREATIVE PLAY SESSIONS

Join us for weekly creative play sessions at the Elephant & Castle Community Hub! Open to all children aged 0-3 and their parents/carers, these sessions will see your little ones act out scenarios and adventures for a fun-filled hour! Places are limited so [sign up here!](#)

The sessions will run weekly until May and will be held at the following times on Fridays:

10am-11am: **15 months-3 years**

11:30am-12:30pm: **0-14 months**

All sessions will be at the **Elephant & Castle Community Hub, 40 Elephant Road, Castle Square, Unit 21, SE17 1EU.**



CELEBRATE CREATIVITY  
INTERNATIONAL WOMEN'S DAY

# COLLAGE YOUR POWER

**MARCH 6TH 5 - 7 PM**

Creative Club London invites you to **Collage Your Power**, a vibrant event celebrating Women's Day with art, creativity and connection at Elephant & Castle Community Hub.

DATE: Thursday, March 6th  
TIME: 5 - 7 PM  
LOCATION: 40 Elephant Road, Castle Square, Unit 21, Second Floor, SE17 1EU

Scan for more information

## WOMEN'S DAY CREATIVE CLUB

This International Women's Day, join Creative Club London for an evening of art, empowerment, and bold creativity! Collage Your Power is a fun and inclusive workshop & exhibition, which will include an art exhibition showing pieces by local artists, and an interactive collage workshop with a welcoming, creative community.

This is a free event with all materials included! [Find out more here.](#)

Date: **Thursday 6th March**

Time: **5pm-7pm**

Location: **Elephant & Castle Community Hub, 40 Elephant Road, Castle Square, Unit 21, SE17 1EU**