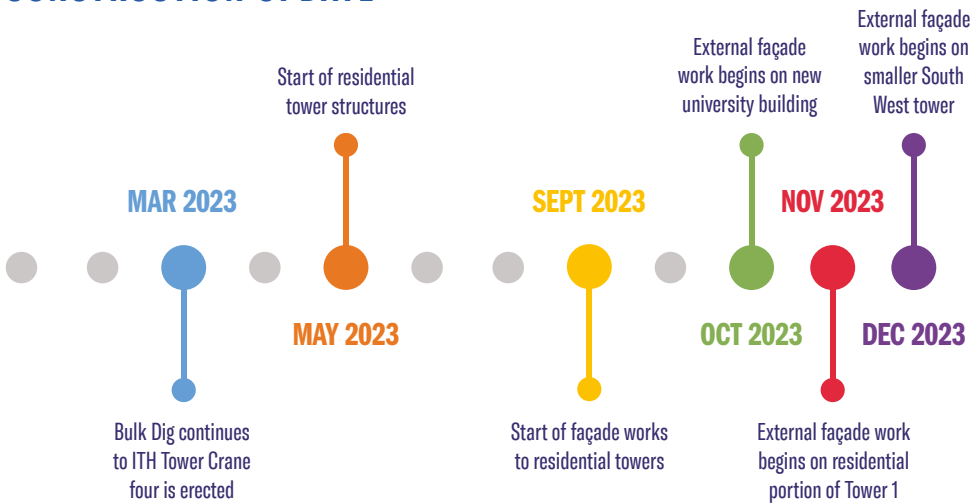


COMMUNITY UPDATE

SITE ACTIVITY UPDATE

CONSTRUCTION UPDATE



- Multiplex continue to make progress digging out the London Underground Integrated Ticket Hall.
- Concrete cores for the E1 (UAL) and E2 (34 storey residential tower) buildings from basement to first floor are progressing well.
- The Basement Level One floor slab is now complete.
- Tower Crane four is now up and Tower Crane five is scheduled to come on site in March 2023.
- There are currently four gates in use across the project. These are managed by teams of dedicated and trained traffic marshals.

KEEPING YOU INFORMED

The development team including contractor Multiplex will continue to hold online Neighbourhood Information Forums. During these forums we will provide you with an update on the project and inform you of all planned works for the upcoming month.

THE NEXT VIRTUAL NEIGHBOURHOOD INFORMATION FORUM IS SCHEDULED FOR TUESDAY 7TH MARCH AT 18:30

To register your interest, please email info@elephantandcastletowncentre.co.uk and a meeting link will be sent in advance

MULTIPLEX CONTACTS AT ELEPHANT AND CASTLE:

Amy Dawson
Social Value and Community Lead
M: 07715 629701

Eddie O'Shea
Construction Director

Project Support Contact Details
M: 07738 809164
E: ECTC@multiplex.global

Website:
www.elephantandcastletowncentre.co.uk

Standard working hours will be:
Monday—Friday 08:00 to 18:00
Saturday 08:00 to 13:00

Agreed additional working hours:
Monday—Friday 18:00 to 19:00



MULTIPLEX

COMMUNITY UPDATE

SOCIAL VALUE UPDATE

Multiplex's supply chain partner AJ Morrisroe is pleased to be able to offer a new engineering apprenticeship for the project. The new Health and Safety Apprenticeship offer is being advertised and we are engaging with potential candidates.

In February we brought a local graduate, Alfie, on to the project in a part time position on Multiplex's Commercial Team. Alfie studied at London South Bank University, and completed a work placement with us in January before beginning this new role last month.

We also hosted two other work experience placements in February 2023. The first was facilitated by AJ Morrisroe, which hosted a student for a week; and the second was led by Multiplex which hosted Sowmya, a local student who has completed her studies at London South Bank University and spent time learning from the Design Team on site. There are currently four people on a waiting list for a work experience placement and Multiplex is working to secure placements for them soon.

In late February 2023, Multiplex's supply chain partner, AJ Morrisroe, also welcomed a group of students from Portsmouth University. The students were given a site tour, by the Health and Safety Manager followed by a Q&A session, and had the opportunity see all the great work happening on site. Early discussions have taken place between Get Living and Multiplex regarding a joint careers fair in June 2023. Further details will be confirmed shortly.

COMMUNITY UPDATE



**BUNNY HOP
EGGSTRAVAGANZA**

Come down to Castle Square in Elephant and Castle for the Bunny Hop Eggstravaganza!

- Meet the Easter Bunny
- Facepainting
- Easter-themed art & craft workshops for children
- Dance Performances and workshops by School of Dance Tutorials and Upside Down Dance Academy
- Chocolate eggs and discount vouchers from Castle Square traders

Saturday 8th April 11am – 5pm
Castle Square, 40 Elephant Rd,
London SE17 1EU

@castlesquarelondon
castlesquarelondon.com

CASTLE SQUARE

BUNNY HOP EGGSTRAVAGANZA

Join us on Saturday 8th April from 11am-5pm for the Bunny Hop Extravaganza at Castle Square! Enjoy FREE activities including face painting, workshops, performances, music and food from the local traders. Follow the Easter Bunny to find Easter treats throughout the day. Visitors can also enjoy 10% off at all of the traders at Castle Square and Ash Avenue. Visit the website at castlesquarelondon.com for more information.

INTERNATIONAL WOMEN'S DAY

In celebration of International Women's Day on Wednesday 8 March, Castle Square is championing the female founders and business owners in the local Elephant and Castle community. From food and beverage to clothing and beauty services, the small independent female-run businesses of Castle Square who have been in the local area for decades provide an authentic and a diverse mix of retail to Londoners, putting Elephant and Castle on the map! For more information on our local businesses visit castlesquarelondon.com

MOTHER'S DAY

Local businesses will be serving up delicious treats in celebration of Mother's Day! From Wednesday 1st March until Sunday 18th March, there will also be a discount up to 20% off across the Castle Square retailers. Visitors will be able to support the female entrepreneurs (excluding restaurants) and their peers whilst treating the mother figures in their lives this March.

ENVIRONMENTAL SUSTAINABILITY UPDATE

BUILDING IN SUSTAINABILITY

The Multiplex team are using a new reporting software to measure, monitor and reduce waste and carbon emissions. The software uses artificial intelligence to scan delivery tickets and waste transfer notes, ensuring a level of reporting not previously utilised in the construction industry.

TIMBER

To date, the project has used 300m³ of timber, all of which has a responsible sourcing certification such as FSC & PEFC. This provides Multiplex with full transparency over where the timber has been originally sourced and the sustainable practices used in its production.

NOISE, DUST & VIBRATION

The Multiplex team continue to monitor noise, dust and vibration, ensuring limits are kept within the Southwark's code of Construction Practice. Best Practicable Means are implemented onsite to ensure impact is kept to a minimum.