

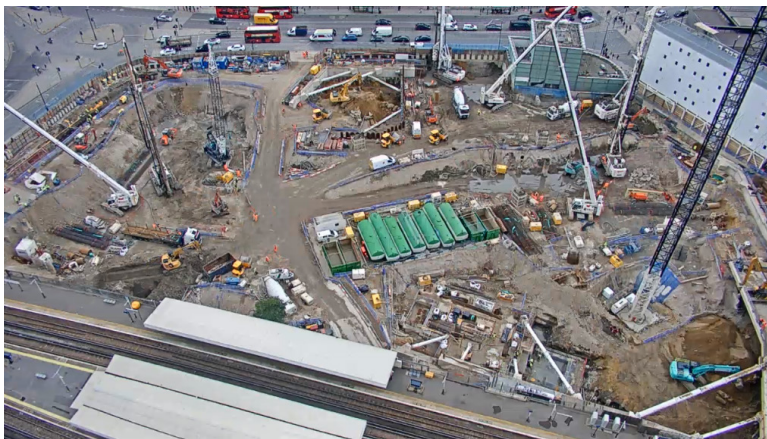
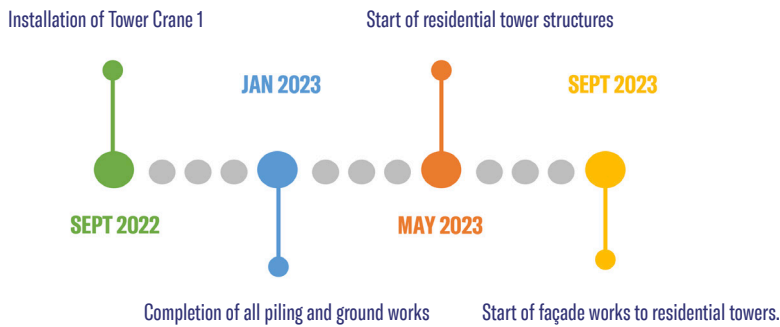
COMMUNITY UPDATE

SITE ACTIVITY UPDATE

CONSTRUCTION UPDATE

Queen Elizabeth II

The Elephant and Castle Town Centre Team were very sorry to learn of the passing of Her Majesty the Queen. Her tireless sense of duty during her long reign has been an inspiration to us all and our thoughts are with the Royal Family at this difficult time. As a mark of respect, the site was shut for the state funeral and there was a reduction in the number of vehicles in and out of the site over the mourning period.



- Piling and ground works continue and are progressing well. There are currently over 150 operatives on site.
- Over 450 of a total of 553 main basement bearing piles have also been completed.
- Multiplex continue to make progress within the London Underground Integrated Ticket Hall. To date we have installed over 250 of 408 large diameter piles.
- The first sections of the basement slab have also progressed and by November we will be starting on the first concrete cores for the building.
- Tower Crane 1 will be erected this month and a further two tower cranes will be put up in November.
- There are currently four gates in use across the project and are managed by teams of dedicated trained traffic marshals.
- A new office and welfare block has been built on the northern end of the site.

KEEPING YOU INFORMED

The development team including contractor Multiplex will continue to hold online Neighbourhood Information Forums. During these forums we will provide you with an update on the project and inform you of all planned works for the upcoming month.

THE NEXT VIRTUAL NEIGHBOURHOOD INFORMATION FORUM IS SCHEDULED FOR TUESDAY 04 OCTOBER AT 18:30

To register your interest, please email info@elephantandcastletowncentre.co.uk and a meeting link will be sent in advance.

MULTIPLEX CONTACTS AT ELEPHANT AND CASTLE:

Amy Dawson
Social Value and Community Lead
M: 07715 629701

Matt Fairbrother
Construction Director

Project Support Contact Details
M: 07738 809164
E: ECTC@multiplex.global

Website:
www.elephantandcastletowncentre.co.uk

Standard working hours:
Monday—Friday 08:00 to 18:00
Saturday 08:00 to 13:00

Agreed additional working hours:
Monday—Friday 18:00 to 20:00

ELEPHANT + CASTLE

TOWN CENTRE

ISSUE 25 | October 2022

COMMUNITY UPDATE

ENVIRONMENTAL SUSTAINABILITY UPDATE

AIR QUALITY

All plant and equipment on site go above and beyond the Greater London Authority's air quality regulations, ensuring the project is minimising its impact on local air quality.

ONSITE CARBON SAVINGS

Since switching fuel from red diesel to green diesel (HVO) for many of the plant used onsite, the project has been able to save over 280 tonnes of carbon being emitted. This equates to taking 60 cars off the road for one year.

WASTE REDUCTION

The large proportion of the excavated soil is now not being treated as a waste, but being used as a backfill material for a different construction project, helping to reduce the projects waste intensity.

CONSIDERATE CONSTRUCTORS

The project was audited by the Considerate Constructors Scheme on 20th September 2022. The project scored a fully compliant score (45/45).



MPX-LSBU Visit 12.09.2022



FPS Early Careers Group Visit 06.09.2022

SOCIAL VALUE UPDATE

EMPLOYABILITY

A new apprenticeship opportunity has been provided for a local Southwark resident. George has secured the opportunity on site and is undertaking a Stage 1 Apprenticeship.

The Multiplex team hosted a charity fundraising event at Docklands Sailing and Watersports Centre on Wednesday 21st September. The proceeds will go directly to inclusive theatre company Chickenshed, Multiplex's chosen charity.

On Monday 12th September, Multiplex hosted members of the LSBU Net-Zero/Soft Landings team, who are creating new courses for students based on the decarbonisation of the industry and how Net-Zero is built into project procurement and operations. The project will be working with the LSBU team to support their students, help deliver training content, and facilitate numerous site visits for students.

Members of the Federation of Piling Specialists (FPS) Early Careers Group attended the project on 06 September for an introductory project presentation by Multiplex Expanded, one of Multiplex's supply chain partners, also gave a detailed and technical presentation on current piling on site.

SOUTHWARK BUSINESS AWARDS

Southwark businesses were all dressed up for the Southwark Business Excellence Awards last month. The annual awards were a chance to celebrate the outstanding work that local businesses do, both in terms of achieving their own goals and being champions of the best social and environmental business practices in Southwark.

The Elephant and Castle Town Centre team was proud to sponsor the Contribution to the Community Award. The category recognised businesses who go the extra mile to give back to local people, and we were excited to have so many great entries for the award. On the night Diana Barranco, Community Director at Elephant and Castle Town Centre, presented the award to the team at Bizzie Bodies for their excellent work providing classes for the local community.

